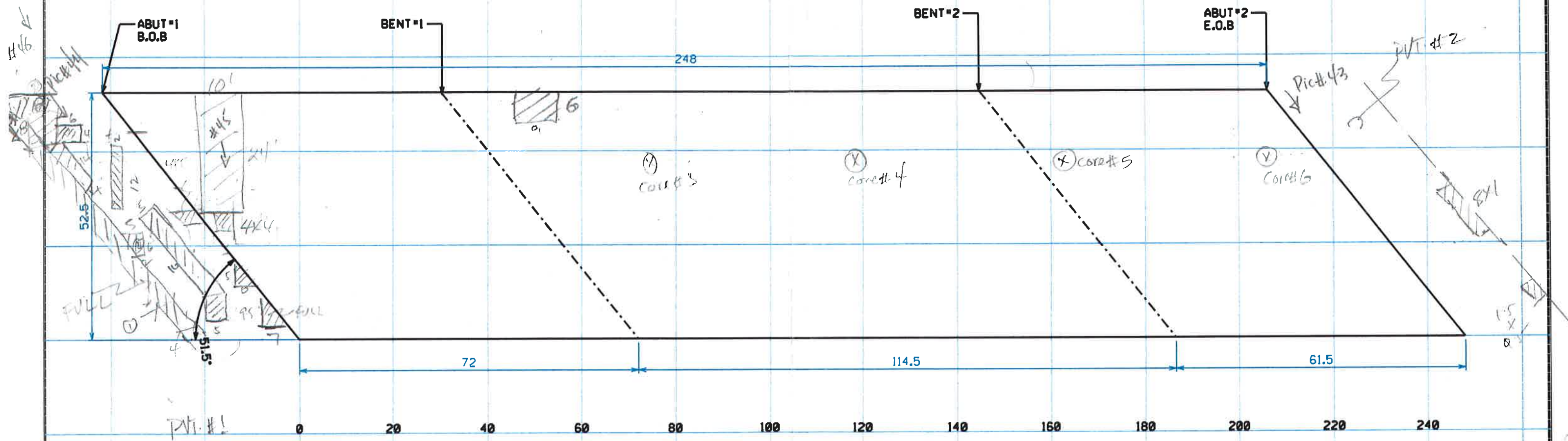


APPROACH #1 IS IN BAS SHAPE



BRIDGE FED ID# 19104400004

STATE OF TENNESSEE
 DEPARTMENT OF TRANSPORTATION
 OFFICE OF BRIDGE INSPECTION
 AND REPAIR

BRIDGE NO. 19-1440-0.72 L
 CROSSING: CSX RAILROAD

COUNTY: DAVIDSON

DRAWN	ASHRAF ARMANIOS	SCALE	1:20
DATE		SKEW	51°-30' RIGHT
BRIDGE WIDTH	52.5'	BRIDGE LENGTH	248'



Pic # 43 Approach 2 Joint



Pic #44 Approach 1; Bridge # 19-I440-072 L



Pic # 45 Breakout at Abut. #1



Pic #46 Breakout along Approach 1 Joint; Bridge # 19-I440-0.72 L /CSX



0.72 WBL

CST

Full depth

174-107-41

Picture taken
1st visit 1/21/09
278

Pic ~~278~~

9th March

19-5440-0227
/CST

19-11-2010-0322 / CST